

SMD Molded Power Inductor

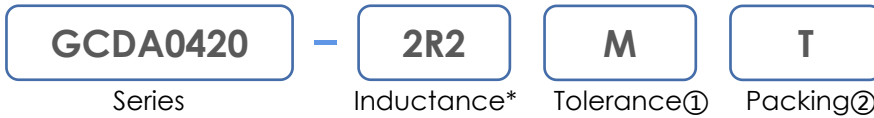


**GCDA0420 Series**

**FEATURES**

- Integrated Shielding Construction
- Alloy Material with Excellent withstanding Current Characteristics
- Featured with High Inductance and Low DCR Characteristics
- Variable Inductance Value (0.22uH ~ 10uH) with Wide Frequency Range
- Operating Range: -45°C~+125°C(Including Self- Temperature Rise)
- RoHS Compliant

**PART NUMBER CONSTRUCTION**

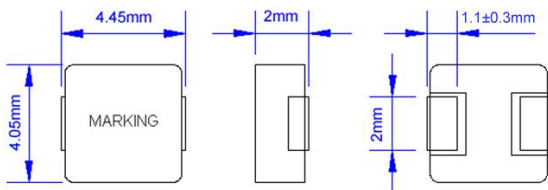


① Tolerance: M = 20%    N = 30%  
 ② Packing: B = Bulk    T = Tape and Reel  
 \*Refer to Electrical Specification table

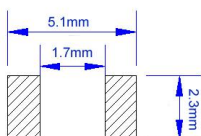
**ELECTRICAL SPECIFICATIONS**

Part Number	Inductance(μH) ±20%	DCR(mΩ)		Irms (A)	Isat (A)
		Typical	Max		
GCDA0420-R22M	0.22	5.3	6.4	8.0	14
GCDA0420-R33M	0.33	8.5	11	7.0	12
GCDA0420-R47M	0.47	11	14.5	6.0	11
GCDA0420-R56M	0.56	16	21	5.5	10
GCDA0420-R68M	0.68	17.5	23	5.0	9.0
GCDA0420-1R0M	1.0	26	34	4.5	8.0
GCDA0420-1R5M	1.5	35	45	4.0	7.0
GCDA0420-2R2M	2.2	51	60	3.0	6.0
GCDA0420-3R3M	3.3	78	90	2.5	4.0
GCDA0420-4R7M	4.7	100	110	2.0	3.5
GCDA0420-6R8M	6.8	160	175	1.8	3.0
GCDA0420-100M	10	220	250	1.5	2.5

**PRODUCT DIMENSIONS**

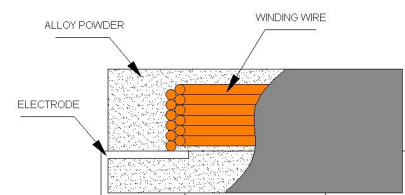


**RECOMMENDED LANDING PATTERN**



**MATERIALS & STRUCTURE**

- Core:** Alloy Powder
- Wire:** Copper
- Terminal:** Nickel Plating
- Ink:** Black



**PACKING**  
3000PCS/REEL